

Welcome to the Second Ridge Landfill Expansion Open House

The purpose of this event is to keep our neighbours, local residents and the broader community informed about the proposed expansion and get your input on the draft Terms of Reference which is available at **www.ridgelandfill.com**

Progressive Waste Solutions staff and consultants are available to answer any questions you may have as you read the presentation boards.



Progressive
Waste Solutions

About Progressive Waste Solutions



Progressive
Waste Solutions

- Progressive Waste Solutions is a leading provider of comprehensive waste management services in Ontario as well as across Canada.
- We have earned a highly valued reputation for environmental protection, waste diversion and recycling and development of renewable energy projects.
- We are committed to the most environmentally responsible management practices.
- Progressive Waste Solutions is a growing company that employs over 60 persons in the Municipality of Chatham-Kent.

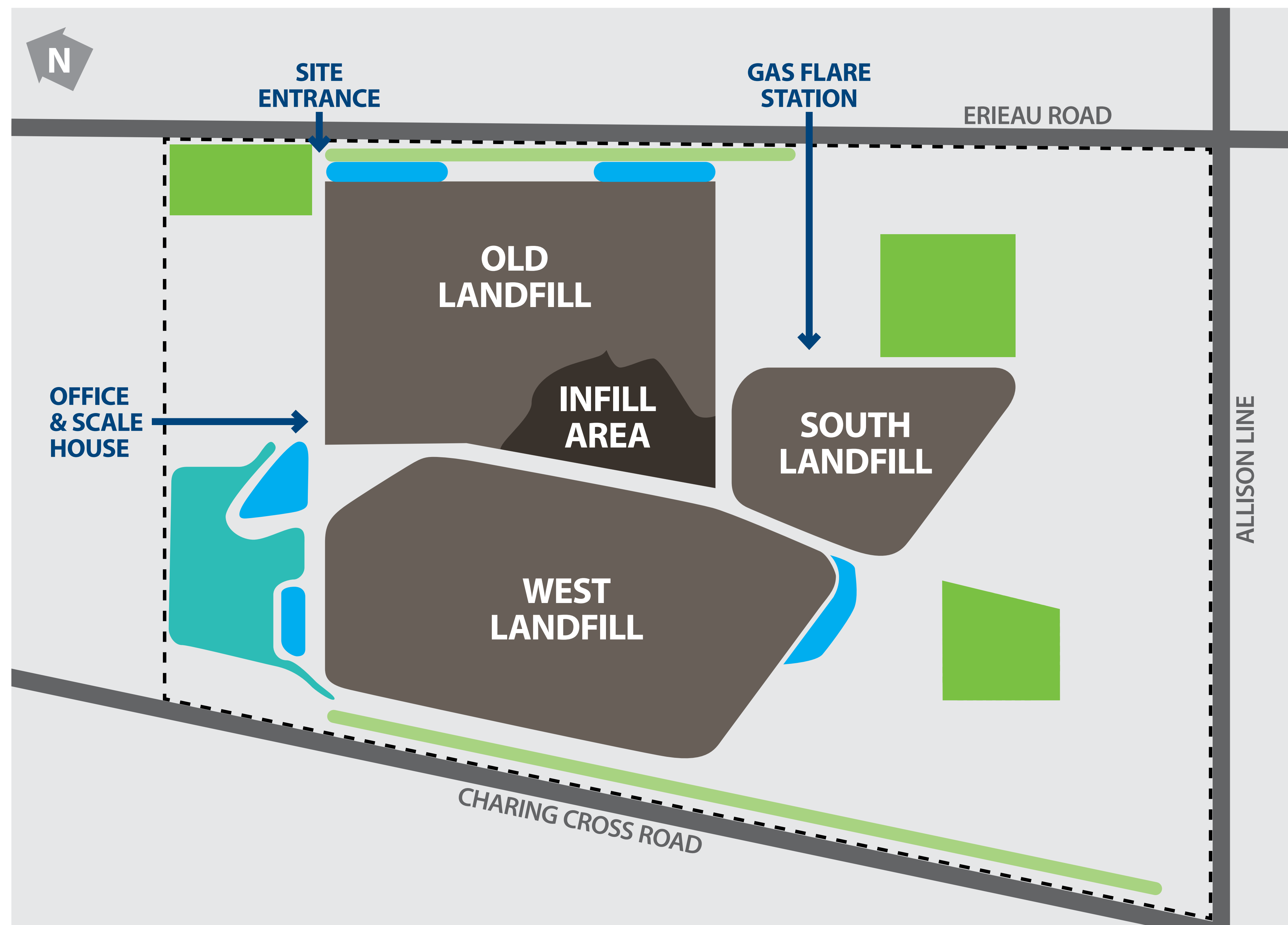


The Ridge Landfill

- Landfill operations began in 1966.
- Progressive Waste Solutions takes ownership and operation in 2005.
- The facility employs 23 persons.
- The Ridge Landfill receives all Chatham-Kent residential waste, and industrial commercial waste from across Ontario.
- The landfill is expected to reach capacity in 2022.



Current Landfill Site Operations



- Approved Waste Disposal Area
- Infill Area
- Existing Woodlot Area
- Existing Flood Control Facility
- Existing Stormwater Pond
- Existing Berm
- Progressive Waste Property Line

Why Is Progressive Waste Solutions Proposing to Expand the Ridge Landfill?

Our Future Plans



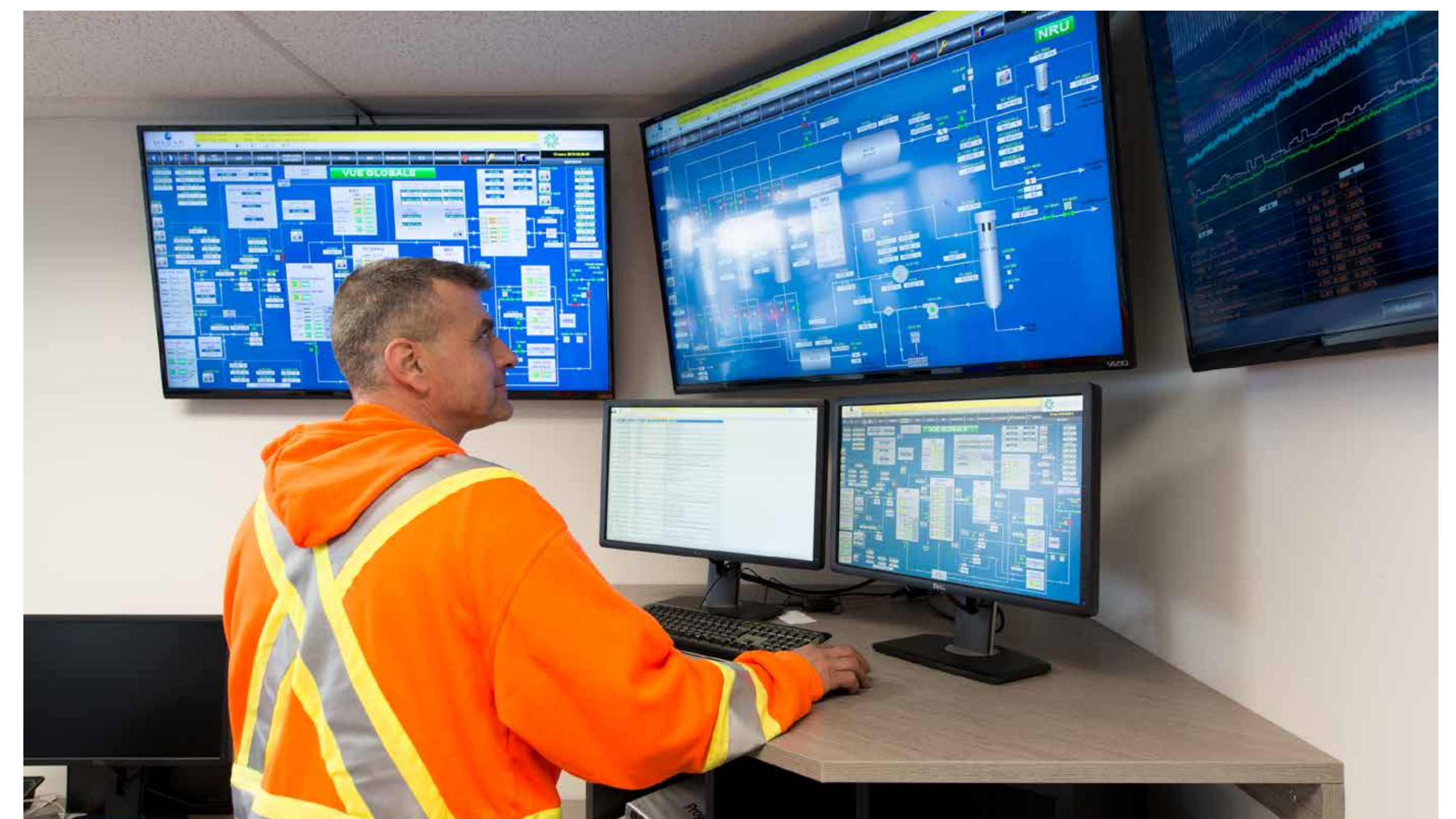
Progressive
Waste Solutions

Progressive Waste Solutions is proposing to expand the life of the Ridge Landfill for an additional 20 years following stringent Ontario Ministry of Environment and Climate Change landfill regulations.

The annual permitted disposal capacity will not increase. Progressive Waste Solutions will continue to accept industrial and commercial waste from across the province and will seek to expand its service area for residential waste across Ontario.

The expansion would also include a public drop-off depot to allow residents to divert materials which are not being collected in the current residential recycling program as well as the construction of a new community activity centre.

As a separate undertaking, Progressive Waste Solutions plans to develop a biogas facility to convert landfill gas into pipeline quality natural gas which would be the largest biogas facility in Ontario and one of the largest in North America. We already operate a similar biogas facility at our Lachenaie Landfill in Quebec.



Why Is Progressive Waste Solutions Proposing to Expand the Ridge Landfill?

A Partner in the Community



Progressive
Waste Solutions

The Ridge Landfill contributes approximately \$13 million directly and indirectly to the community. Of that:

- Approximately \$9 million is spent annually on salaries, construction and road maintenance, goods and services purchased, taxes, etc.
- An annual royalty payment to the Municipality of Chatham-Kent based on the volume of material that comes into our facility from outside Chatham-Kent. In 2015, this amounted to \$2.3 million; and since 2005 we have contributed over \$15.9 million to the Municipality.
- Significant financial contributions are made to the Ridge Landfill Trust based on the volume of waste the landfill receives each year. In 2015, the Ridge contributed approximately \$1.1 million. These monies are to benefit the local community such as the building of the Community Centre Park and splash pad (see photos at right), a new seniors' centre and youth drop in centre in downtown Blenheim.



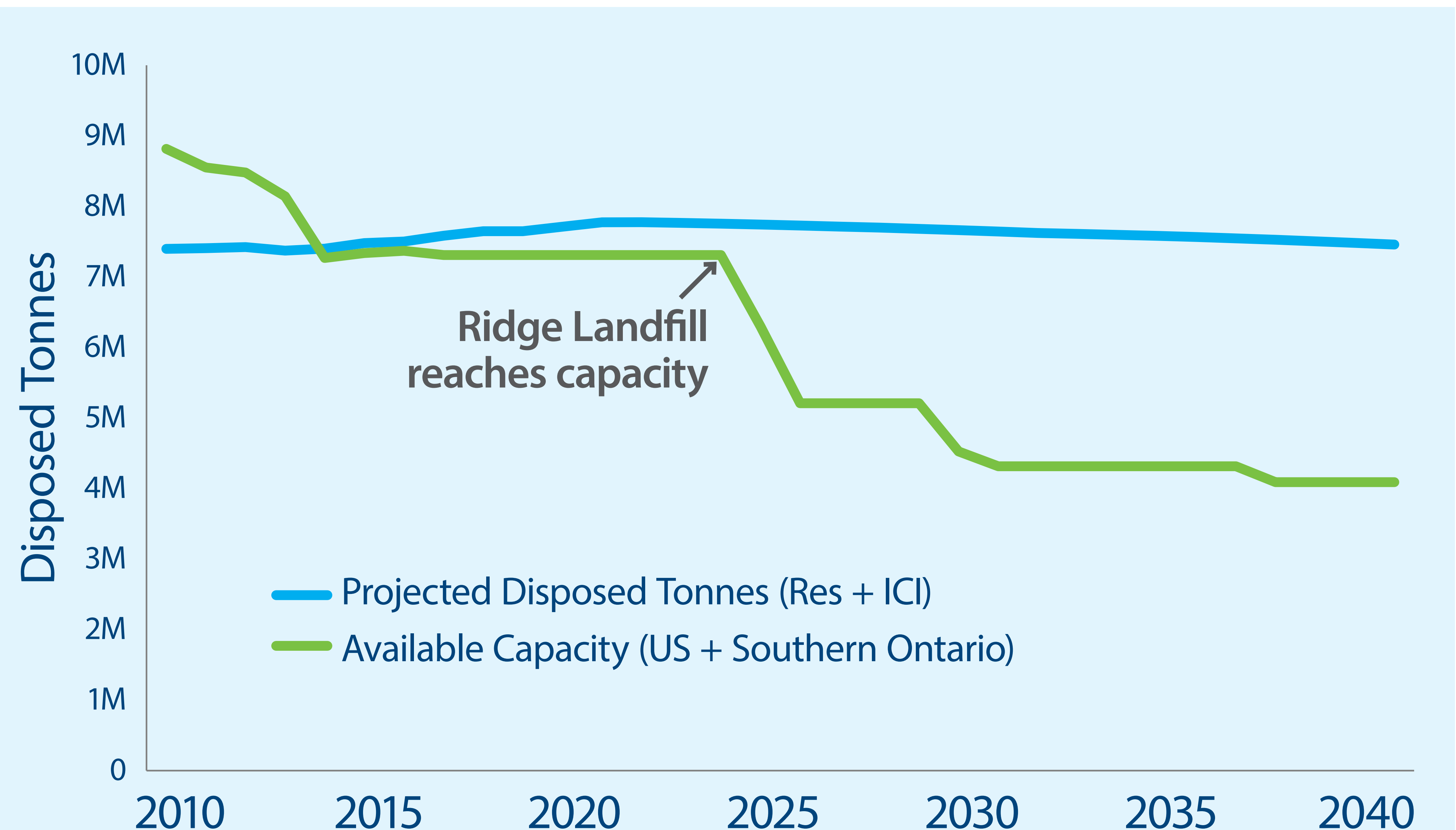
Why Is Progressive Waste Solutions Proposing to Expand the Ridge Landfill?

Need for More Capacity



Despite increased waste diversion, over seven million tonnes of residual waste is disposed of annually in Ontario and the U.S. With provincial population growth, this need is expected to continue.

With the expected closure of existing Ontario landfill sites over the next 10 years (which would include the Ridge Landfill reaching capacity in 2022), it is estimated that there will be a need for new or expanded waste disposal facilities in Southern Ontario.



Note: The graph illustrates projected tonnage assuming a moderate increase in waste diversion in both the residential (Res) and Industrial, Commercial and Institutional (ICI) sectors (e.g. residential diversion increase to 55% and ICI diversion increase to 35%).

Why Is Progressive Waste Solutions Proposing to Expand the Ridge Landfill?

Alternatives to Expansion



Progressive Waste Solutions considered alternative ways to continue to provide waste disposal services:

Do nothing

Involves closing the Ridge Landfill. This alternative does not provide capacity to meet the long term waste disposal needs for Chatham-Kent and Southern Ontario.

Close Ridge Landfill and construct a new landfill

Involves finding a new landfill site location. Past work demonstrates that there is no location for a landfill site in Southern Ontario that is equivalent to or better than the Ridge. Progressive Waste Solutions does not own any other property suitable for landfill in Southern Ontario.

Expand Ridge Landfill

Involves expanding the Ridge Landfill. This alternative provides capacity to meet the long term disposal needs but does not result in any additional diversion of materials from disposal.

Expand the Ridge Landfill with waste diversion

Involves creating more long-term disposal capacity for local and Southern Ontario needs.

Additional waste diversion processing capacity could be added at the facility and/or elsewhere.

Preferred Alternative

What will the EA Look At?

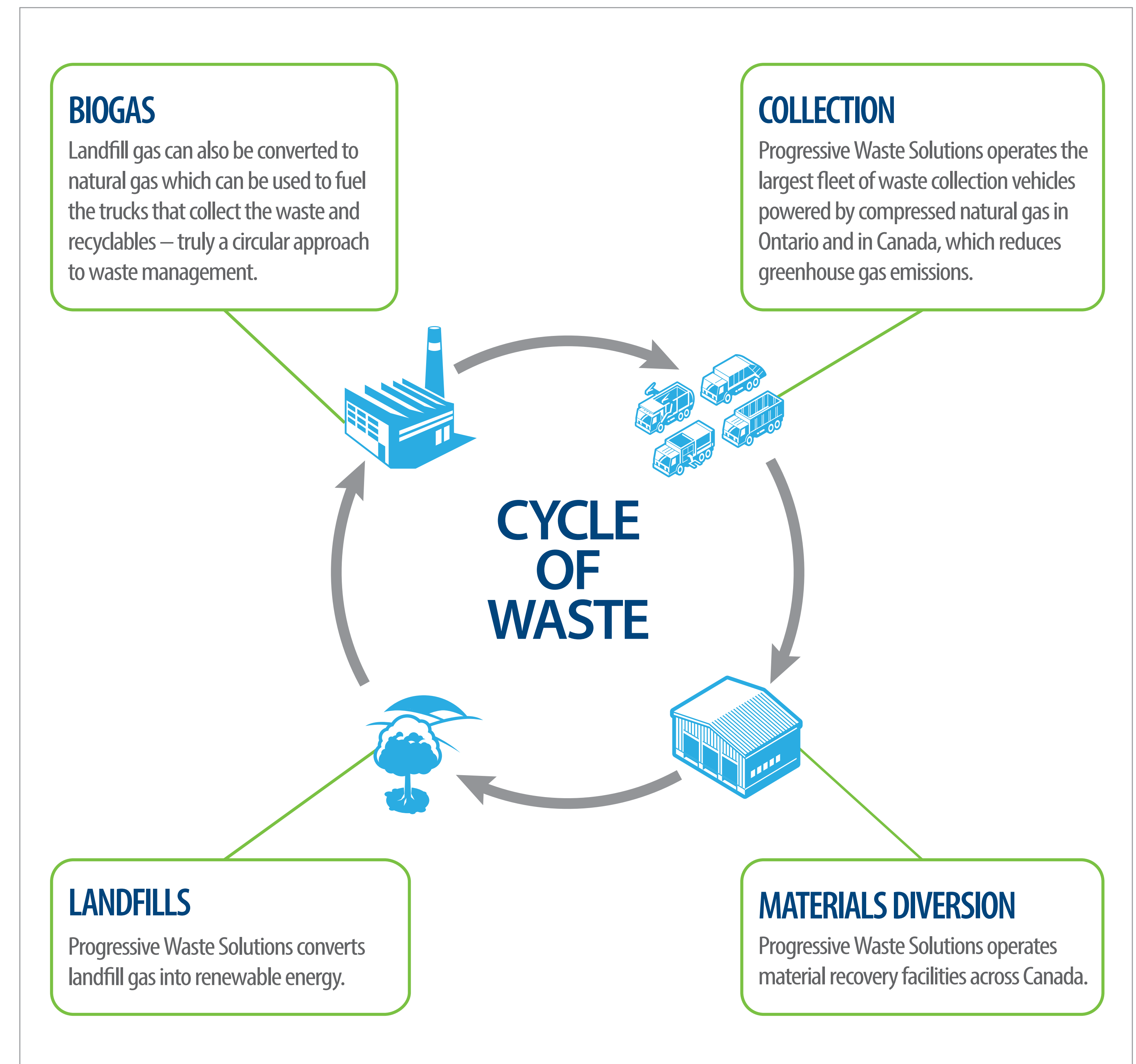
Expand the Landfill with Waste Diversion

Progressive Waste Solutions will consider laterally expanding the current landfill and/or bring the height of the old landfill to same elevation as current landfill and/or mining the old landfill.

As part of the assessment, Progressive Waste Solutions will also consider the recovery of additional resources through enhanced diversion opportunities such as an expanded public drop-off area at the Ridge Landfill to divert additional recyclable materials (e.g. household hazardous, electronic wastes, etc.) and other recyclable materials that may be designated by the Province of Ontario.

Additional waste diversion opportunities will be identified by the Waste-Free Ontario Act and that are technically feasible and economically viable for Progressive Waste Solutions.

Should additional resource recovery occur at the Ridge Landfill there is the potential for additional traffic to the site and associated nuisance effects as well as potential nuisance effects from on-site processing activities (e.g. noise, dust, and odour).

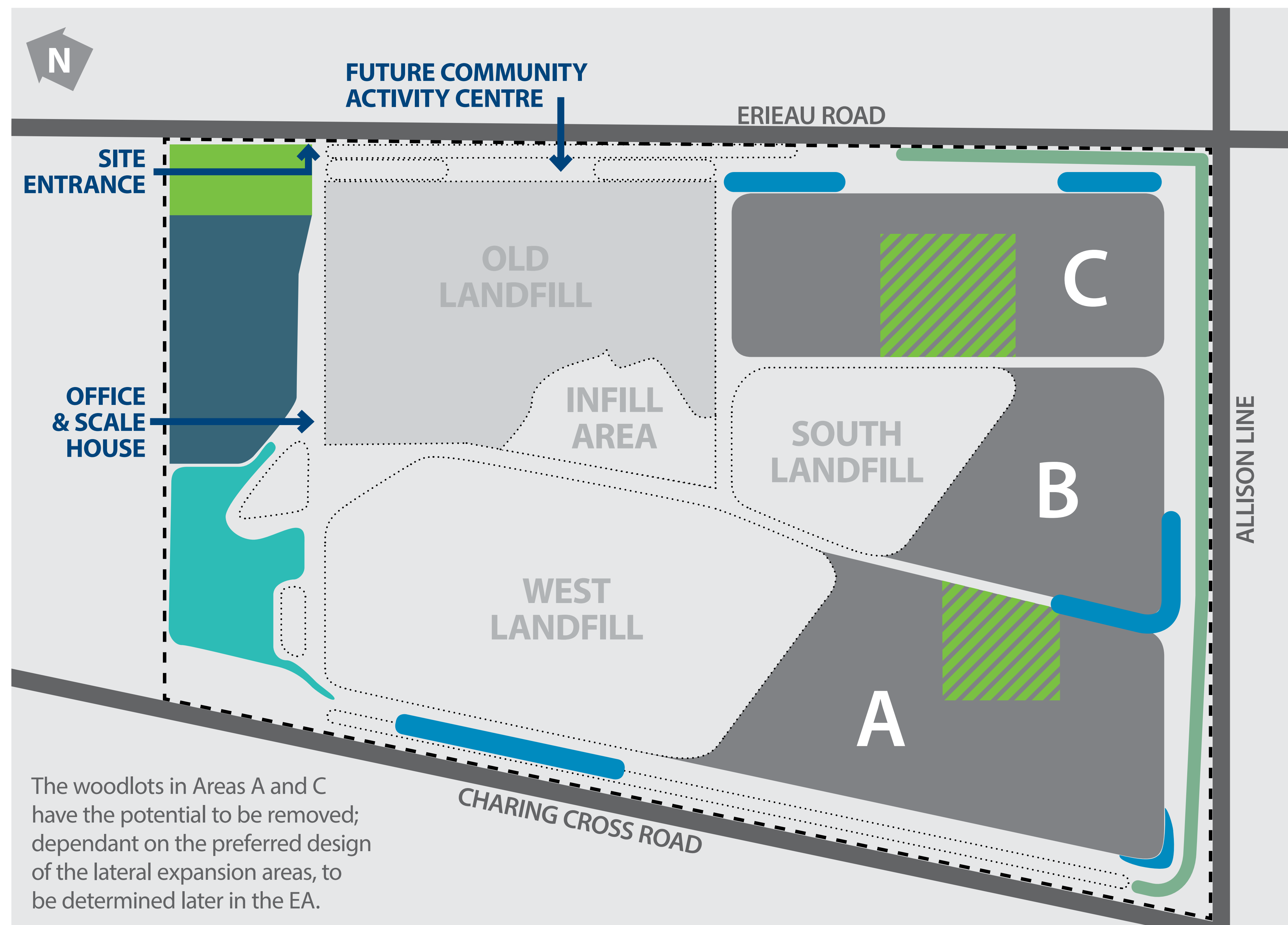


What will the EA Look At?

The Proposed Expansion



Progressive
Waste Solutions



The woodlots in Areas A and C have the potential to be removed; dependant on the preferred design of the lateral expansion areas, to be determined later in the EA.

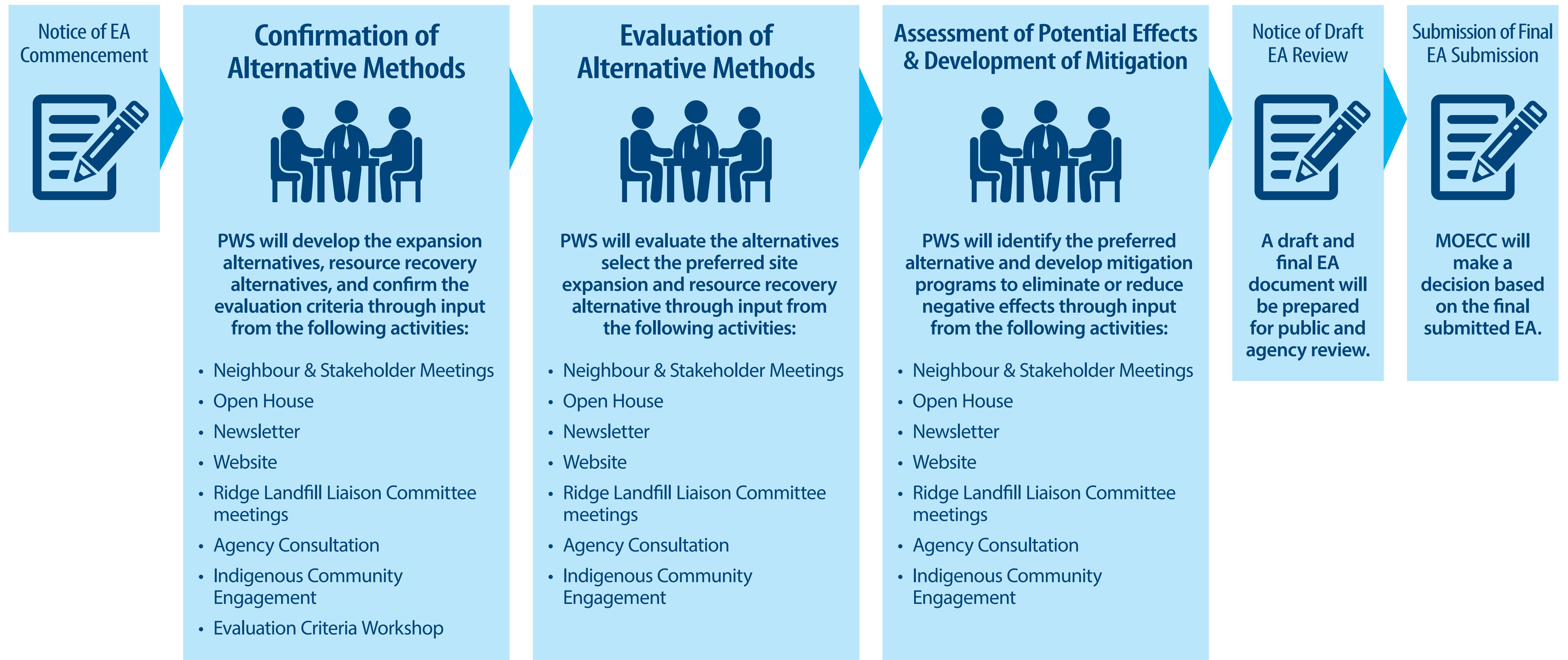
- Potential Lateral Expansion Areas
- Potential Vertical Expansion/
Landfill Mining Area
- Existing Woodlot Area
- Potential Flood Control/
Woodlot Compensation Area
- Existing Flood Control Facility
- Proposed Stormwater Pond
- Proposed Berm
- Progressive Waste Property Line

What will the EA Look At?

EA Milestones and Consultation Plan



Progressive
Waste Solutions



What will the EA Look At?

Study Areas for the EA



Progressive
Waste Solutions

PWS has identified three study areas to:

- confirm existing conditions
- create a common study area to evaluate site expansion alternatives, and
- identify and assess potential impacts of the preferred expansion alternative and establish mitigation to minimize effects.



Map of study areas ►

What will the EA Look At?

Existing Site Conditions & Future EA Studies



Progressive
Waste Solutions

In the EA, PWS will finalize criteria, in consultation with the community, to determine the potential for impacts on the following:



Biology

(e.g. fish, wildlife, woodlots and habitats)



Geology/Hydrogeology

(e.g. groundwater protection)



Surface Water

(e.g. on-site drains)



Atmospheric

(e.g. air, noise, dust and odour)



Agriculture

(e.g. disruption to local farm operations)



Land Use

(e.g. on other land uses)

More detailed information is contained in the draft Terms of Reference at www.ridgelandfill.com

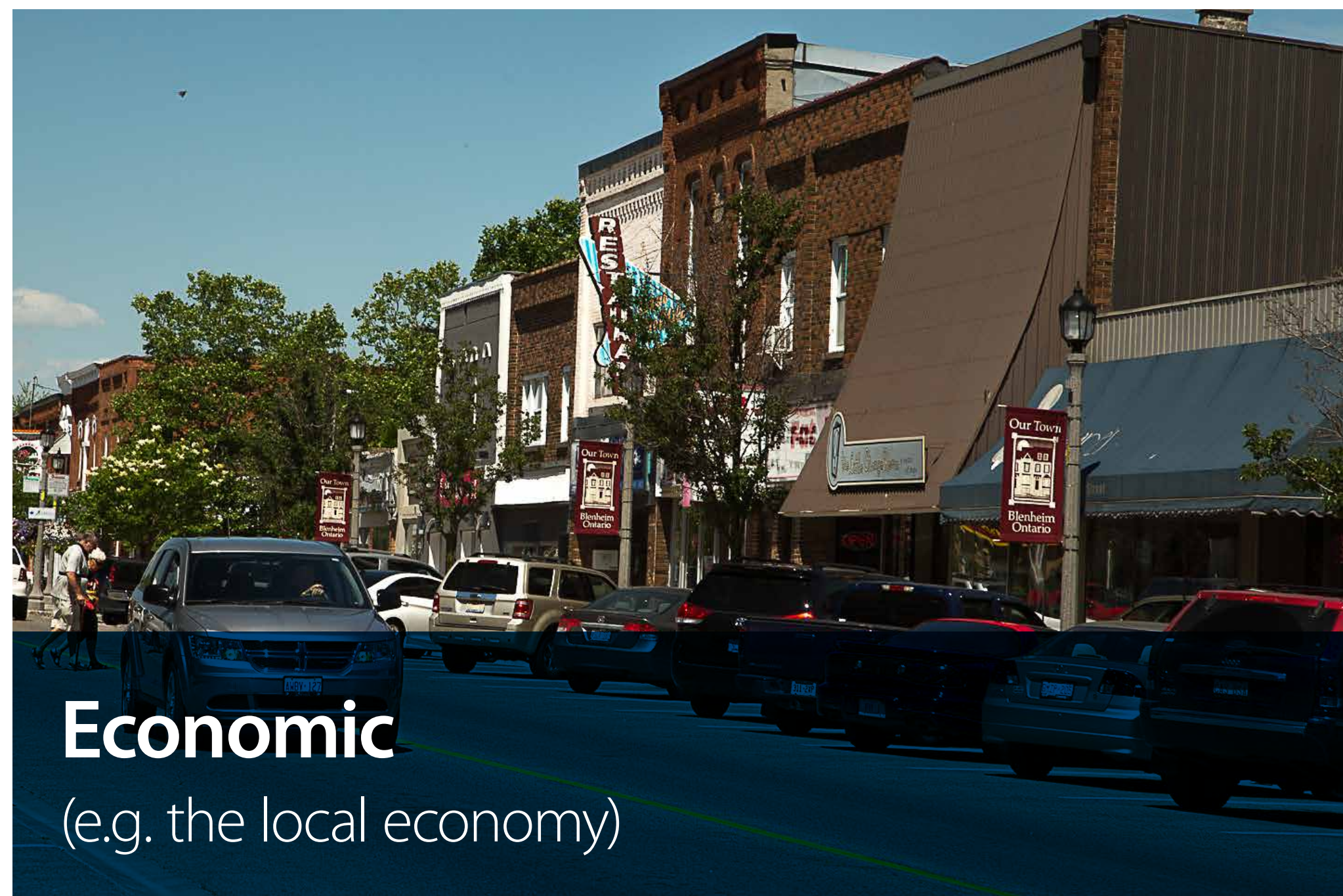
What will the EA Look At?

Existing Site Conditions & Future EA Studies



Progressive
Waste Solutions

In the EA, PWS will finalize criteria, in consultation with the community, to determine the potential for impacts on the following:



Economic

(e.g. the local economy)



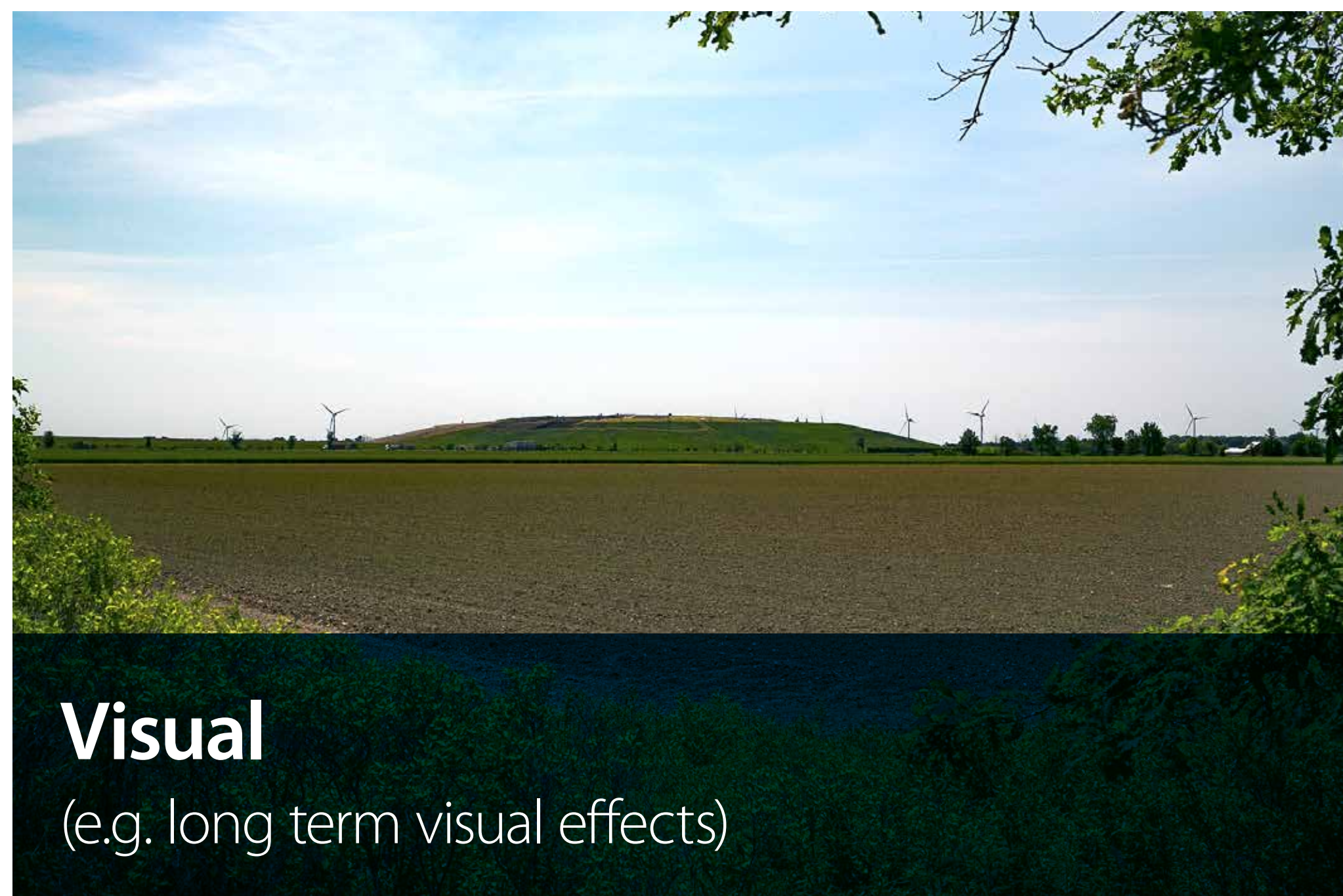
Archaeology/Cultural Heritage

(e.g. local cultural heritage)



Social

(e.g. neighbours and residents)



Visual

(e.g. long term visual effects)



Aviation and Bird Hazard

(e.g. the use of the airport)



Traffic

(e.g. traffic flows)

Environmental Management Today and into the Future

Environmental Management System



We have an excellent environmental record at the landfill site.

- We have an environmental management system in place for the landfill that follows stringent Ministry of Environment and Climate Change regulations.
- We continually review and update our operational programs in and around the landfill to maintain environmental protection and prevention of litter, birds, odour, noise, dust and traffic from impacting our neighbours and the community.
- The EA will define any additional measures required to ensure the environmental integrity of the site going forward.



Gas collection well at the Ridge Landfill

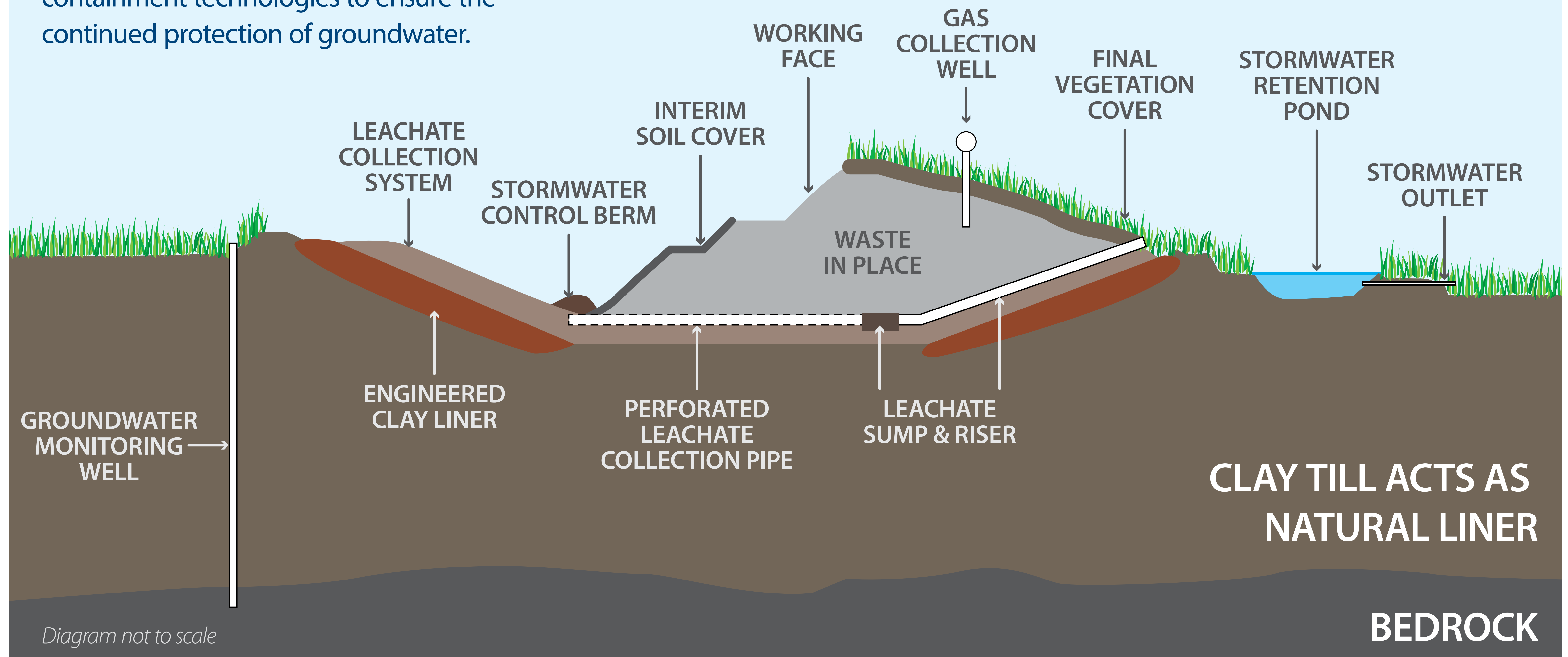
Environmental Management Today and into the Future

An Environmentally Engineered Landfill



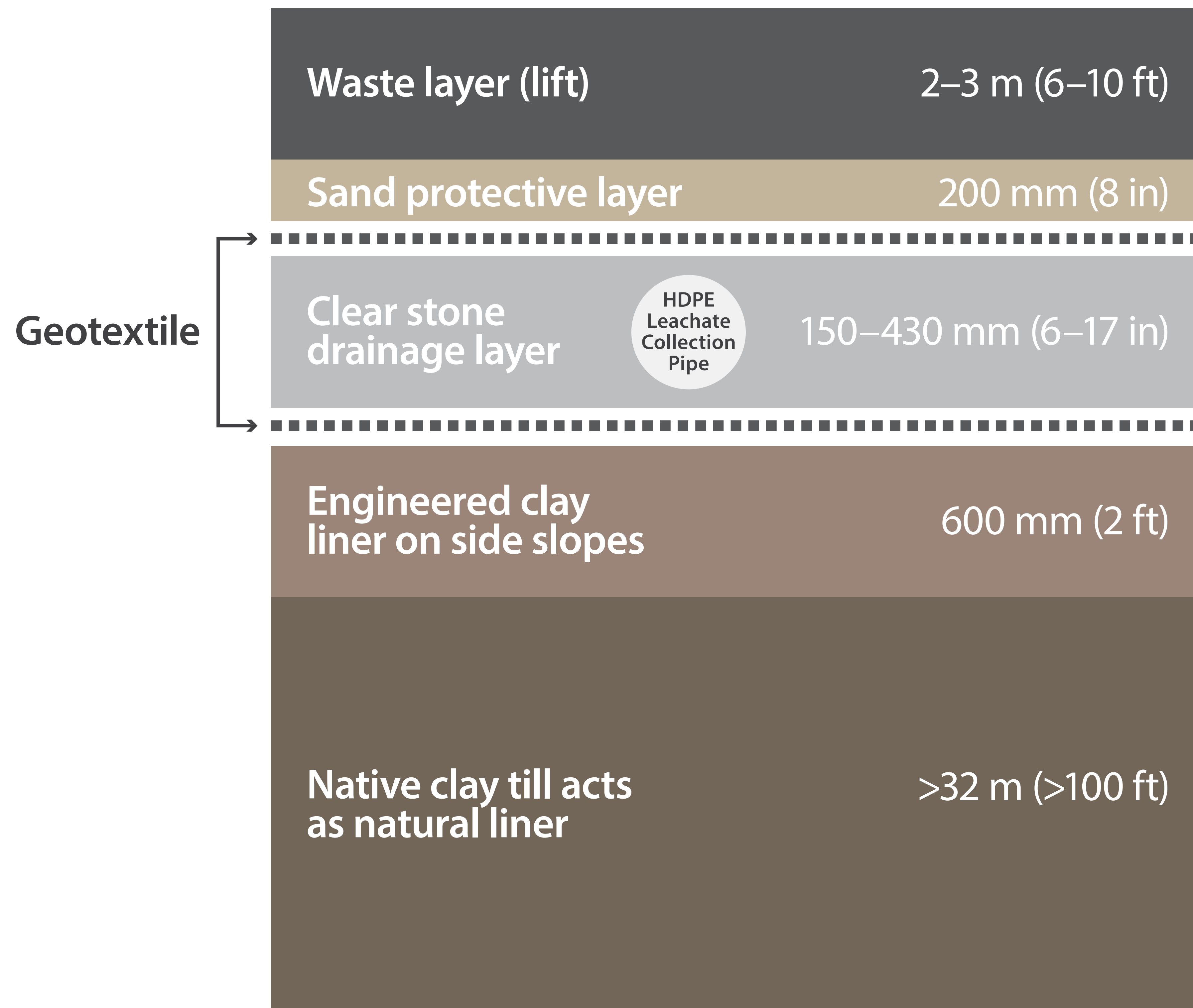
Progressive
Waste Solutions

The Ridge Landfill uses engineered leachate containment technologies to ensure the continued protection of groundwater.



More detailed information is contained in the draft Terms of Reference at www.ridgelandfill.com

Leachate Collection System



Leachate: Water (either from rain or decomposition of waste) that percolates through the waste.

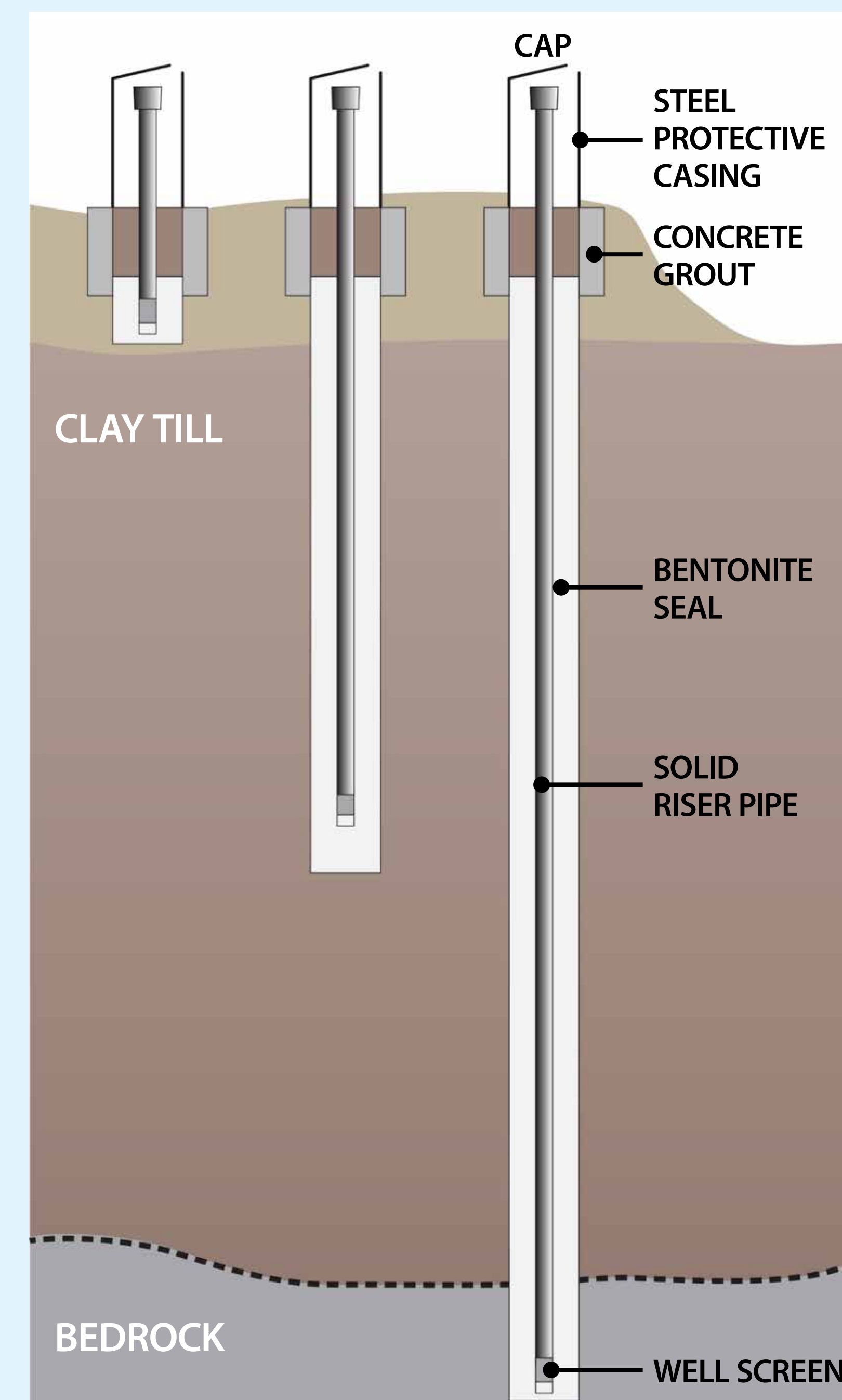
Leachate Collection System: A system of stone drainage material and pipes and that collects the leachate at the bottom of the landfill.

Liner: A barrier layer beneath the leachate collection system to prevent leachate from entering the groundwater.

Groundwater Monitoring System

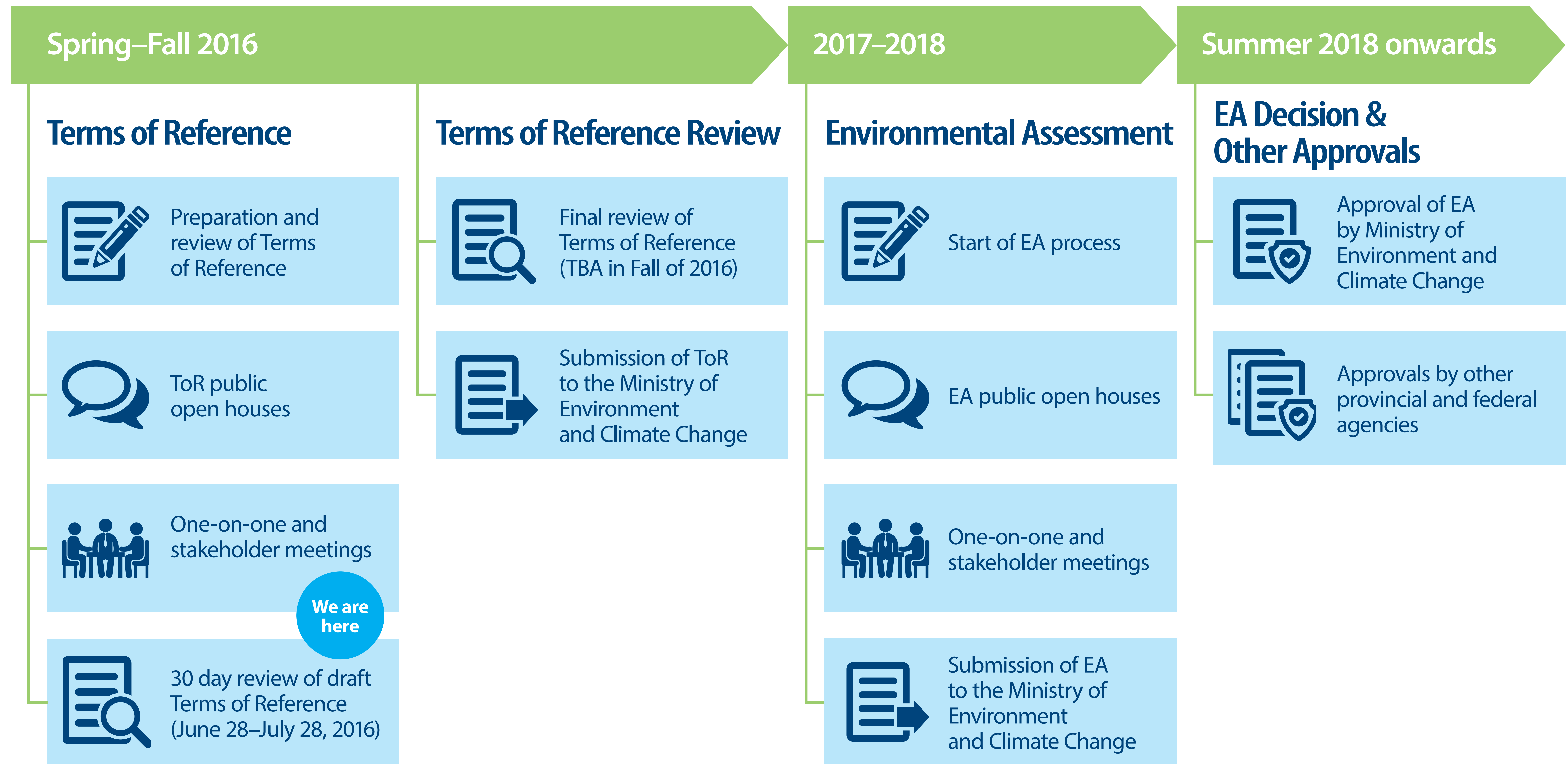
- The Ridge Landfill has an environmental management system that monitors all aspects of the landfill including groundwater in and around the landfill.
- Annual monitoring of ground and surface water is conducted by a third party providing assurances the environment is being protected.
- There have been no impacts to the groundwater identified.

Typical Groundwater Monitoring Wells



Wells are placed strategically around the site to monitor groundwater at various depths.

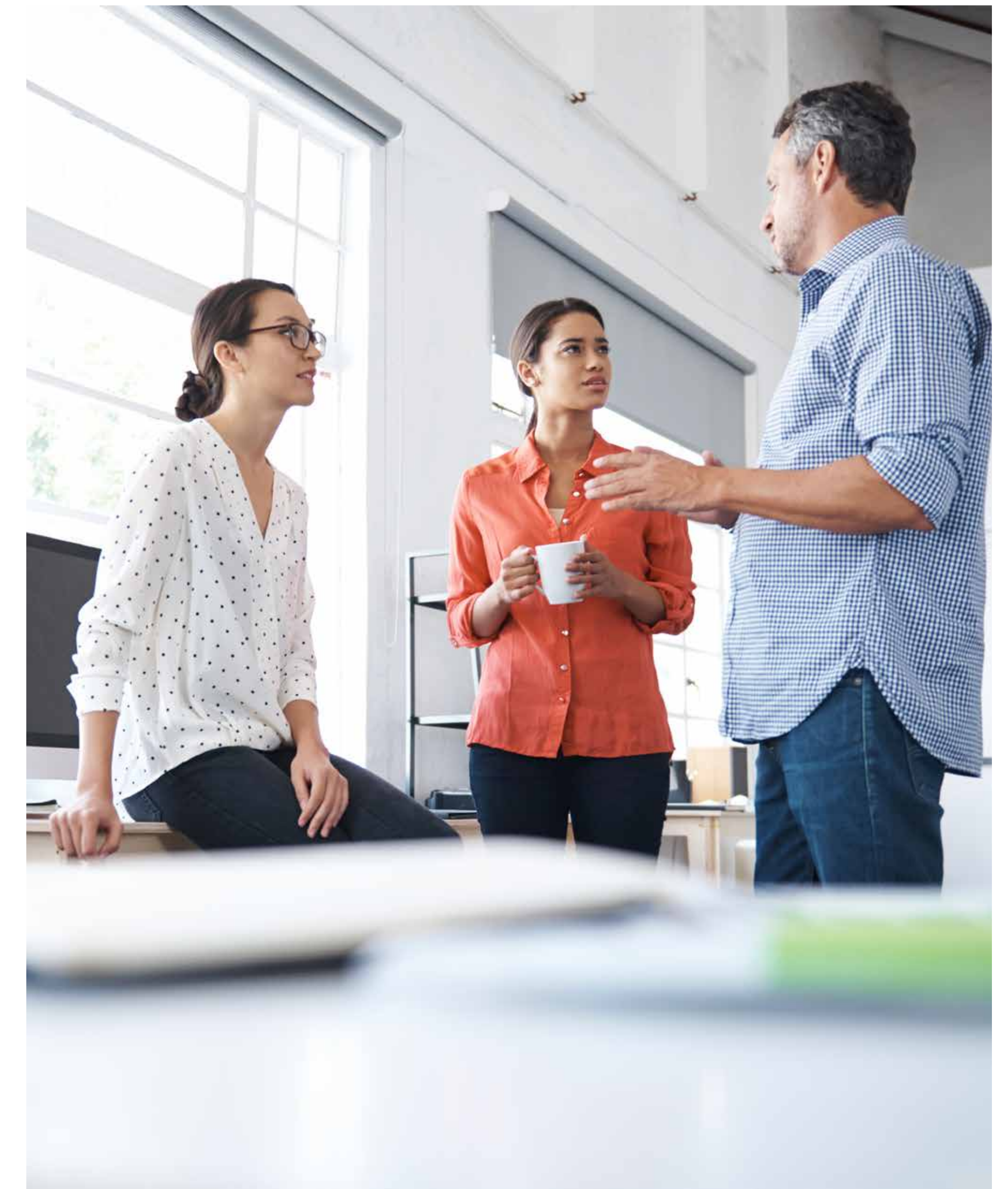
Environmental Assessment Process



What We've Heard So Far

Progressive Waste Solutions has received comments and questions from local residents, the public and agencies and other stakeholders through the consultation process to date. The following summarizes comments raised by the public and other stakeholders:

- Requests for support and funding from the Ridge Landfill Trust;
- Concerns that the landfill might begin to accept residential waste from the City of Toronto thus increasing the potential traffic and nuisance effects associated with the landfill;
- Sentiment that the community has been host to the landfill for a long time and that the land should be returned to agricultural production;
- Support for the use of landfill gas as a resource;
- Concerns about odour attributed to the landfill;
- Interest in compensation and property value protection;
- Sentiment that the landfill negatively impacts people's enjoyment of their property;
- Concern about potential impacts to groundwater;
- Concerns about truck traffic and potential influence on local travel; and
- Support for increased diversion of waste.



During the Terms of Reference and continuing through the EA, consultation with the community will include:

Public Open Houses & Workshops

To exchange information and hear community concerns and questions.



Community Newsletters

To provide news and information about the site and proposed expansion project.



Stakeholder Meetings

To provide opportunity for one-on-one meetings with Progressive Waste Solutions staff to discuss the proposed expansion project.



Thank you

We want to hear from you!

Your issues or concerns are important to us, and we want to know about them.

We want to ensure that your questions are addressed and that approaches to their resolution are developed and understood.

You can leave written questions or comments you have with us today, or send them to us anytime at: **ridgelandfill.com**

