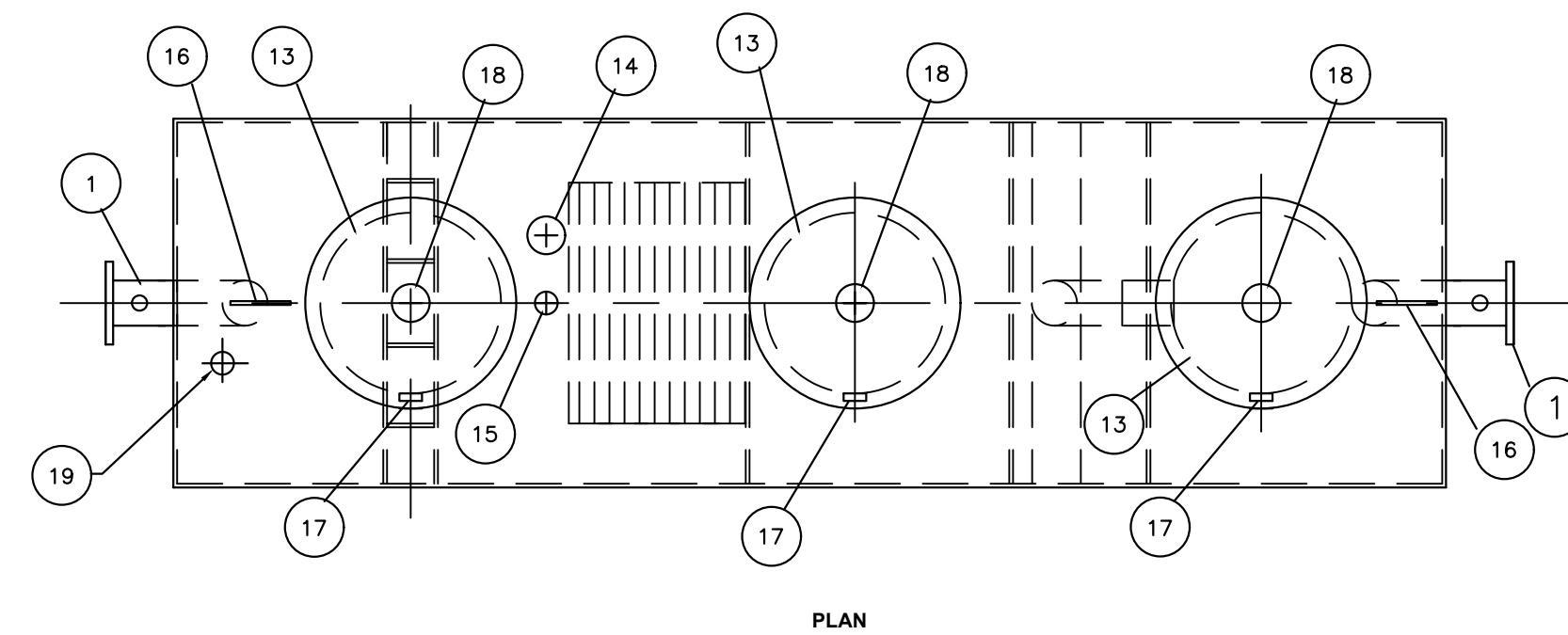
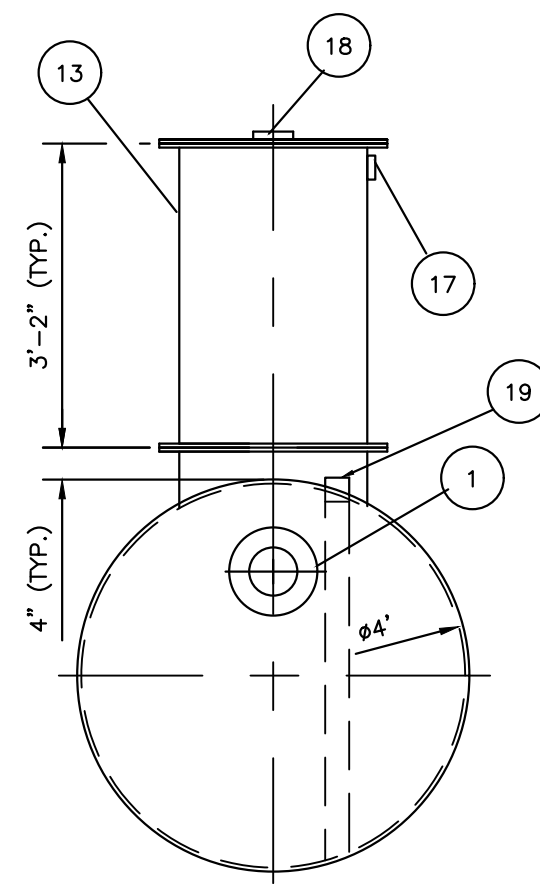


**GENERAL SPECIFICATIONS**

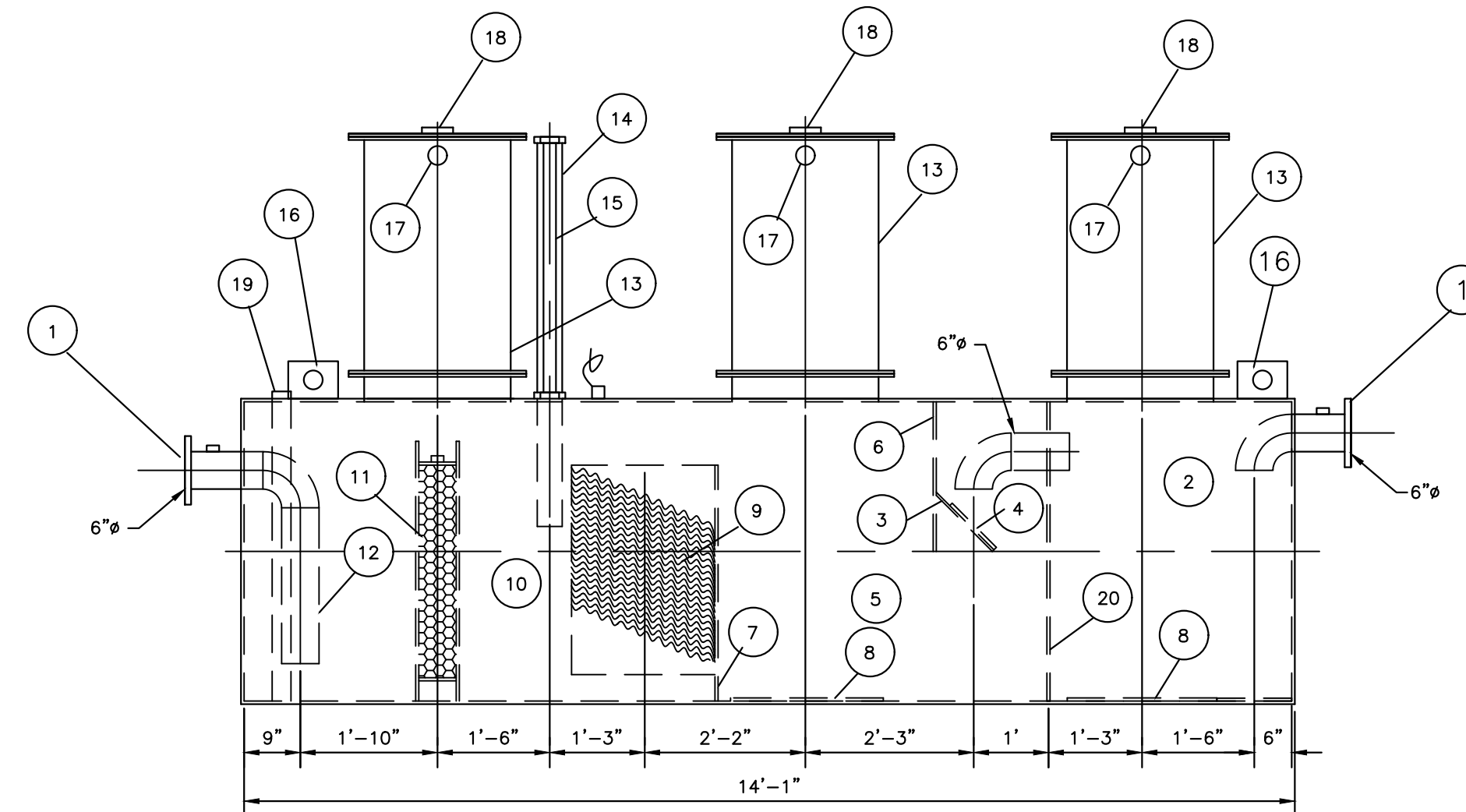
NO. REQ'D: (1)  
 CAPACITY: 1000 GALLON  
 TYPE: HTC, HIGHGUARD, DOUBLE WALL, "G" SERIES  
 MATERIAL: MILD CARBON STEEL  
 FLOW RATE: 100 GPM  
 GAUGE: INNER 7 GA. OUTER 10 GA.  
 HEADS: 7 GA. 10 GA.  
 SURFACE PREP: SSPC NO.6 BLAST ALL EXTERIOR SURFACES  
 COATING: MATERIAL THICKNESS  
 EXTERIOR- HIGHGUARD (75 MILS)  
 INTERIOR-  
 CONSTRUCTION : LAP FIT & WELD ALL EXTERIOR SEAMS  
 OPERATING PRESSURE : ATMOSPHERIC



PLAN



END VIEW



PROFILE

**1,000 GALLON DOUBLE-WALLED OIL WATER SEPARATOR**

**DETAIL**

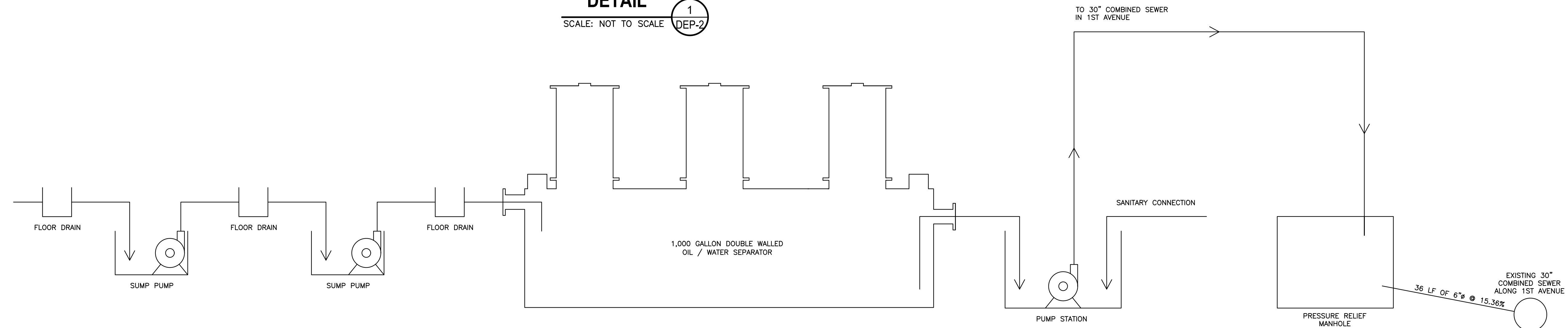
SCALE: NOT TO SCALE **1** DEP-2

**PROVIDED EQUIPMENT**

1. 150# R.F.S.O. FLANGE W/ 2" NPT FOR VENT
2. SLUDGE CHAMBER
3. VELOCITY HEAD DIFFUSION BAFFLE
4. WEAR PLATE
5. SEDIMENT CHAMBER
6. UNDERFLOW BAFFLE
7. SLUDGE BAFFLE
8. STRIKER PLATES
9. PARALLEL CORRUGATED PLATE COALESCER
10. OIL/WATER SEPARATOR CHAMBER
11. 6" THICK COALESCER MATERIAL INSTALLED W/ PULL ROD SHIPPED LOOSE
12. OUTLET DOWNCOMER
13. 24" MANWAY WITH BOLT-ON EXTENSION SHIPPED LOOSE
14. 4" FTG. FOR OIL PUMP-OUT W/ INTERNAL PIPE INSTALLED AND RISER PIPE SHIPPED LOOSE
15. 2" FTG. FOR LEVEL SENSOR W/ RISER PIPE SHIPPED LOOSE
16. LIFTING LUG
17. 2" FTG. FOR VENT TYP. BOTH MANWAYS
18. 4" FTG. FOR GAUGE WITH PLUG TYP. BOTH MANWAYS
19. 2" FTG. FOR LEAK DETECTION 20. 7 GA. BULKHEAD

**NOTE:**

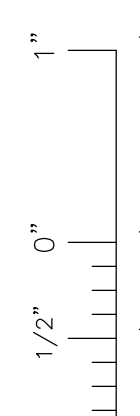
1. 1,000 GALLON OIL / WATER SEPARATOR REPRESENTS HTC, HIGHGUARD, DOUBLE WALL, G SERIES TANK. FROM HIGHLAND TANK.



**PLUMBING RISER**

**DIAGRAM**

SCALE: NOT TO SCALE **2** DEP-2



Unauthorized alteration or addition to this plan bearing a licensed professional's seal is a violation of Section 2209, Sub-Section 2, of the New York Education Law. Only copies from the original of this plan marked with an original professional's seal shall be considered to be valid true copies.

This drawing represents intellectual property of Cornerstone Engineering, Geology and Land Surveying, PLLC. Any modification to the original by other than Cornerstone Engineering, Geology and Land Surveying, PLLC personnel violates its original purpose and as such is rendered void. Cornerstone Engineering, Geology and Land Surveying, PLLC will not be held liable for any changes made to this document without express written consent of the originator.

KRISTEN M. THORNTON  
 N.Y.P.E. Lic. No. 067294 Date

REV	DATE	DESCRIPTION	OWN BY	DES BY	CHK BY	APP BY
10	2019					

**cornerstone** PLLC  
 PREPARED BY:  
 CORNERSTONE ENGINEERING, GEOLOGY AND LAND SURVEYING, PLLC  
ALL PROFESSIONAL ENGINEERING WORK IS PERFORMED BY DULY LICENSED PROFESSIONAL ENGINEERS UNDER THE APPROPRIATE STATE REGISTERED PROFESSIONAL ENTITY.

WASTE CONNECTIONS OF NEW YORK, INC.  
 50TH STREET TRANSFER STATION  
 BROOKLYN, NEW YORK 11232  
**OIL / WATER SEPARATOR**

SHEET NO.  
**DEP-2**  
 PROJECT NO.  
 190499