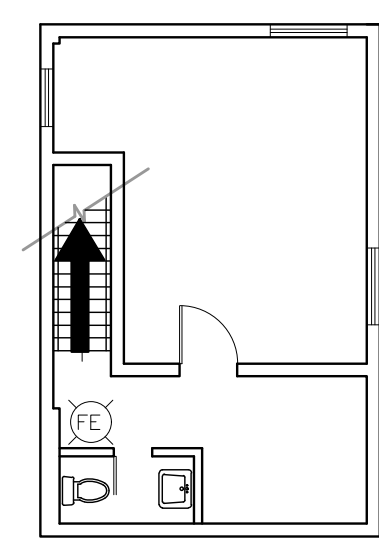
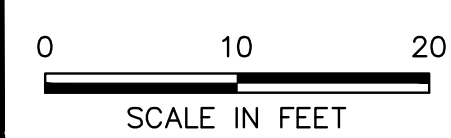


File: X:\PROJECTS\WASTE CONNECTIONS\190499 - 50th STREET WASTE CONNECTIONS\190499 - 50th STREET WASTE CONNECTIONS - PLAN.DWG Layout: SHEET 05 User: ROBERT SCHILLBERG Jun 04, 2020 - 8:26am



- LEGEND:**
- EVACUATION ROUTE
  - EXISTING PROPERTY LINE
  - EXISTING WATER CONNECTION
  - EXISTING STORM SEWER
  - EXISTING SANITARY/COMBINED SEWER
  - EXISTING EXHAUST FAN
  - EXISTING WALL MOUNTED INLET LOUVER
  - EXISTING ROOF MOUNTED INLET LOUVER

- NOTES:**
- INFORMATION USED TO DEVELOP THIS DRAWING WAS TAKEN FROM AN ELECTRONIC FILE OF A DRAWING ORIGINALLY PREPARED FOR IESI NY CORPORATION BY GALLI ENGINEERING, P.C. OF MELVILLE, NEW YORK, TITLED "N.T.S.D.E.C. - PART 360 RENEWAL FACILITY SITE PLAN", DATED 2/8/13, PROVIDED BY IESI NY CORPORATION.
  - ON 05/15/2019 AND 06/06/2019 CORNERSTONE ENGINEERING, GEOLOGY AND LAND SURVEYING, PLLC PERFORMED SITE VISITS AND WALKTHROUGHS TO CONFIRM EXISTING SITE FEATURES AND OPERATIONAL CONDITIONS. CORNERSTONE DID NOT CONDUCT A FORMAL FIELD SURVEY TO VERIFY THE ACCURACY AND VERACITY OF THE INFORMATION AS REFLECTED ON THE ABOVE REFERENCED DRAWINGS AND ASSUMES NO RESPONSIBILITY FOR THE ACCURACY OF SAME.
  - THE WORK PRODUCT INCLUDED WAS UNDERTAKEN IN FULL CONFORMITY WITH GENERALLY ACCEPTED PROFESSIONAL CONSULTING PRINCIPLES AND PRACTICES TO THE FULLEST EXTENT AS ALLOWED BY LAW. CORNERSTONE ENGINEERING, GEOLOGY AND LAND SURVEYING, PLLC DISCLAIMS ALL WARRANTIES, EXPRESS OR IMPLIED, INCLUDING WARRANTIES OF MERCHANTABILITY OR FITNESS FOR A PARTICULAR PURPOSE. THIS WORK PRODUCT IS SOLELY FOR THE USE AND RELIANCE OF WASTE CONNECTIONS OF NEW YORK, INC. AND THE CITY OF NEW YORK DEPARTMENT OF SANITATION UNLESS PREVIOUSLY AGREED UPON THAT AN ADDITIONAL THIRD PARTY COULD RELY ON THE WORK PRODUCT.



Unauthorized alteration or addition to this plan bearing a licensed professional's seal is a violation of Section 7209, Sub-Division 2, of the New York Education Law. Only copies from the original of this plan, marked with an original professional's seal shall be considered to be valid true copies.

This drawing represents intellectual property of Cornerstone Engineering, Geology and Land Surveying, PLLC. Any modification to the original by other than Cornerstone Engineering, Geology and Land Surveying, PLLC personnel violates its original purpose and as such its release from Cornerstone Engineering, Geology and Land Surveying, PLLC will not be held liable for any changes made to this document without express written consent of the engineer.

KRISTEN M. THORNTON, P.E.

N.Y.P.E. Lic. 14779 Date 10/10/2019

REV	DATE	DESCRIPTION	DWN BY	DES BY	CHK BY	APP BY
1	06/01/2020	REMOVED SCALE HOUSE	RS	KMT	KMT	KMT
	DATE OF ISSUE	DRAWN BY	CHECKED BY	DESIGNED BY	APPROVED BY	
	10/2019	SHW	RS	KMT	KMT	

cornerstone  
PLLC

PREPARED BY:  
CORNERSTONE ENGINEERING, GEOLOGY AND LAND SURVEYING, PLLC

ALL PROFESSIONAL ENGINEERING WORK IS PERFORMED BY FULLY LICENSED PROFESSIONAL ENGINEERS UNDER THE APPROPRIATE STATE REGISTERED PROFESSIONAL ENTITY.

WASTE CONNECTIONS OF NEW YORK, INC.  
50TH STREET TRANSFER STATION  
BROOKLYN, NEW YORK 11232

**EVACUATION ROUTE PLAN**

SHEET NO.  
**5**  
PROJECT NO.  
190499