

Visit us today for all your landscape needs!

We are open to contractors and the public

PEBBLES
GRAVEL & TOPSOIL INC.



Asphalt & Concrete Recycling

519-352-ROCK(7625)



Our Products:

- Landscape rock, decorative stone and flagstone
- Top soil, mulch and gravel

WE RECYCLE:

- All yard waste (grass, leaves and cuttings) free of charge, but not branches and wood
- Old/used concrete and asphalt

Visit Us:

Monday to Thursday: 7am – 5:30pm

Friday: 7am – 5pm

Saturdays: 8am – 1pm (May to October)

955 Richmond St., Chatham • 519-352-7625

Delivery is available

www.pebblesgravel.com

April 2021



Sunday

Monday

Tuesday

Wednesday

Thursday

Friday

Saturday

BRUSH SET OUT FOR CURBSIDE COLLECTION IS SENT TO LANDFILL.

It must be securely bundled. Weight limit is 20 kg (44 lbs). Size limit is 90 cm x 90 cm x 1.5 m (36" x 36" x 5"). Each bundle counts as one 'bag' toward your 3-bag limit. **Do not place a full totter cart out at curb in addition to yard waste.**

1

2 **Good Friday**
NO SERVICE
Friday collection
picked up on
Saturday this week.

3

4 **Easter Sunday**

5 **Easter Monday**
Regular collection
this week.

6

7

8

9

10

11

12

13

14

15

16

17

18

19

20

21

22 **Earth Day**

23

24

25

26

27

28

29

30

To the
curb by
**7:00
am**

Have a question? Consult the back cover.
www.chatham-kent.ca



Recycling Guide
Inside Back Cover

Yard Waste Accepted at Leaf & Yard Sites

Leaf & yard drop-off sites are listed below.

All residents are allowed 2 cubic metres (approximately 25 garbage bags) of leaf & yard waste free of charge each operating day. All non-biodegradable bags used to carry leaf & yard waste must be emptied on site.

We Accept

Brush, leaves, grass, yard clippings and natural wood no greater than 76 cm (30") in diameter and 1.5 m (5') in length are accepted at the Leaf & Yard Sites.

Please do not use wire or plastic to tie bundles.

Christmas trees are accepted however no decorations or plastic tree bags please.



These items are **NOT** accepted at Leaf & Yard Sites:



Garbage, kitchen scraps, rocks, dirt, sod, tree stumps, larger branches (> 30" in dia.), flower pots/trays, painted or treated wood, railroad ties and animal droppings/manure.



Please note:
ALL boxes and plastic bags must be emptied on site.



No Plastic Bags PERIOD!



- Don't use plastic bags as 'containers' for recyclables
- Keep recyclables loose in recycling boxes

Bags are
NOT ACCEPTED
in recycling boxes.



Municipal Leaf & Yard Sites

Bothwell Leaf & Yard Depot*

MacEwan Street

Mon - Fri: 7:30 am - 3:30 pm

Sat & Sun: 8:00 am - 5:00 pm

Camden Transfer Station*

12187 Splinter Line

Sat: 8:00 am - 4:00 pm

Chatham Leaf & Yard Depot*

22843 Creek Road, across from
Glasshouse Nursery

January to March

Tue & Thu: 12:00 pm - 5:00 pm

Sat: 8:00 am - 3:00 pm

April to October

Mon, Tue, Wed, Thu & Fri: 1:00 pm - 6:00 pm

Sat: 8:00 am - 4:00 pm

November to December

Mon, Tue, Wed, Thu & Fri: 12:00 pm - 5:00 pm

Sat: 8:00 am - 4:00 pm

Dover Transfer Station*

25280 Big Pointe Road

Sat: 8:00 am - 4:00 pm

Harwich Transfer Station*

21633 Communication Road

Mon, Wed, Fri & Sat: 7:30 am - 12:30 pm

Ridgetown Leaf & Yard Depot*

100 Erie Street North

Mon - Fri: 7:30 am - 3:30 pm

Sat & Sun: 8:00 am - 5:00 pm

Romney Leaf & Yard Depot*

22022 Wheatley Road

January to March

2nd & 4th Saturday: 9:00 am - 3:00 pm

April to December

Sat: 9:00 am - 3:00 pm

Tilbury Leaf & Yard Depot*

4 Tower Street

Mon - Fri: 7:00 am - 2:30 pm

Wallaceburg Transfer Station*

505 Water Street

Mon - Sat: 8:00 am - 12:00 pm



NOTE: Refer to www.chatham-kent.ca for
yard waste accepted at these sites.

* Hours of operation subject to change. Closed on Statutory Holidays.

Grasscycling: Your lawn will love it!

Leaving grass clippings on your lawn returns much-needed moisture and nutrients to the soil. Cut properly, clippings are virtually unnoticeable and generally disappear within three days.

Did you know it is a littering by-law violation to put grass in waterways and streets?

Studies show that grasscycling can reduce fertilizer requirements by as much as 30%.

It helps the soil retain valuable moisture, and helps to choke out weeds by denying light and air to them and improving your lawn's weed resistance.

Tips for successful grasscycling:

- Set your mower height to 2.5 inches (6 cm).
- Keep your mower blade(s) sharp.
- Take care to cut no more than one-third of the grass blade height at a time.
- Mow frequently to produce small clippings which will decompose faster.
- Mow when the lawn is dry to prevent clumping.



**When spending time outdoors
in wooded or grassy areas,**

- cover up with light-coloured clothing
- wear socks and closed-toed shoes
- tuck pants into socks
- use insect repellent containing DEET
- stay on marked trails and avoid long grasses
- check your entire body and your pets for ticks
- remove any attached ticks by using finely tipped tweezers
- save the tick and send it to the local health unit for identification

For more information contact Chatham-Kent Public Health Unit (519) 352-7270 www.chatham-kent.ca

May 2021



Sunday

Monday

Tuesday

Wednesday

Thursday

Friday

Saturday

DON'T BAG YOUR GRASS!

Leave the clippings on the lawn by using a mulching mower. Grass clippings are 85% water and decay quickly, returning valuable nutrients back to the soil.



1

2

3

4

5

6

7

8

9

Mother's Day

10

11

12

13

14

15

16

17

18

19

20

21

22

23



24 **Victoria Day**
NO SERVICE • Collection is
one day later this week.

25

26

27

28

29

30



31

Have a question? Consult the back cover.
www.chatham-kent.ca



Recycling Guide
Inside Back Cover

Keep these products out of landfills



✓ Paint ✓ Pesticides ✓ Solvents ✓ Fertilizers

Find information on accepted products and recycling locations at productcare.org/chatham or call 1-877-592-2972 x 239



June 2021



Sunday

Monday

Tuesday

Wednesday

Thursday

Friday

Saturday

		1	2 Clean Air Day	3	4	5
Canadian Environment Week • June 1-7						
6 Canadian Environment Week	7	8	9	10	11	12
13 	14	15	16	17	18	19
20 Father's Day First Day of Summer 	21	22	23	24	25	26
27 	28	29	30	TAKE PRIDE: Keep our community clean. Dumping any material on public or private property is illegal. It also makes our community less attractive, threatens human and wildlife health, and is costly to clean up. Help set a good example: do not dump or litter. Clean up at the curb before summer.		

Have a question? Consult the back cover.
www.chatham-kent.ca

Recycling Guide
Inside Back Cover

E-Waste and Tire Recycling

Electronic waste, used passenger/light truck tires and scrap metal are **NOT** collected at the curb.

Residents have the following options for recycling these items:

E-Waste (see www.recycleyourelectronics.ca for more info.)

Municipal Transfer Stations • see www.chatham-kent.ca for locations.

Best Buy • 802 St. Clair St., Chatham • 519.354.5525

Chatham-Kent Recycling • 6584 Middle Line Road, Merlin • 519.689.4651 or 519.682.9037

CK Animal Rescue • Cedar Springs and Ridgetown • 519.354.5000

Goodwill Attended Donation Centre • 255 Grand Ave. West, Chatham • 519.351.9486

Goodwill Attended Donation Centre • 1416 Dufferin Ave., Wallaceburg • 519.627.9354

Habitat for Humanity • 566 Riverview Drive, Chatham • 519.352.4440

HVP Services • 125 Keil Dr. S., Chatham • 519.360.0821

Staples • 788 St. Clair St., Chatham • 519.360.1344

Rimless Tires ONLY

Municipal Transfer Stations (limit of 10 tires per resident) • see www.chatham-kent.ca for locations.

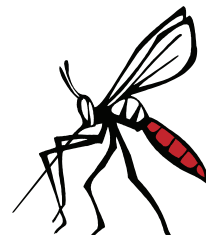
Deliver to the nearest tire collector • see www.rethinktires.ca for locations.

Contact a tire service company • see yellow pages.

Scrap Metal

Municipal Transfer Stations • see www.chatham-kent.ca for locations.

Deliver to the nearest salvage/scrap metal dealer • see yellow pages.



WEST NILE VIRUS

**REDUCE THE RISK
COVER UP-CLEAN UP**

It's time to protect yourself
from West Nile Virus

By doing the following:

- **Remove** standing water where mosquitoes can breed eg: pool covers, discarded tires, flower pots, barrels, bird baths.
- **Trim** or eliminate dense shrubbery.
- **Wear** light coloured clothing with long sleeved shirts, long pants, and socks when outdoors at active times.
- **Use** insect repellent containing DEET.
The concentration of Deet should be no more than 30% for adults and no more than 10% for children.
Do not use Deet on infants under six months old.

**For more information contact the Chatham-Kent
Public Health Unit at 519-352-7270
www.chatham-kent.ca**

July 2021



Sunday

Monday

Tuesday

Wednesday

Thursday

Friday

Saturday

RECYCLING MATTERS!

We offer recycling boxes to curbside residents only.

2 FREE recycling boxes are available at all Municipal Centres (see back cover for locations).

1 **Canada Day**

NO SERVICE

Collection is one day later this week.

2

3

4

5

6

7

8

9

10

11

12

13

14

15

16

17

18

19

20

21

22

23

24

25

26

27

28

29

30

31

Have a question? Consult the back cover.
www.chatham-kent.ca



Recycling Guide
 Inside Back Cover

2021 Household Hazardous Waste Event

Date: Saturday, September 25, 2021



Locations:

Blenheim: Public Works Yard (formerly MTO), 386 Chatham Street South

Chatham (NEW LOCATION): Veolia Environmental Services, 141 Prosperity Way

Wallaceburg: Public Works Garage, 600 Gillard Street

Hours for HHW Event: 8:00 am to 3:00 pm

✓ Accepted Items:

- Gasoline, oils, solvents, BBQ starter
- Aerosol cans
- Batteries (all types)
- Paints, varnishes and stains
- Pool chemicals, ammonia, bleach
- Pesticides, rat poison, cleaning fluids
- Propane tanks and cylinders up to 30 pounds maximum
- Medications / Pharmaceuticals
- Fluorescent light bulbs/tubes
- Compact fluorescent light bulbs (CFL's)
- Syringes/Needles (in puncture-proof container)

✗ Not Accepted Items:

- Agricultural, commercial, or industrial waste
- PCB's
- Explosives and ammunition (contact police)
- Computers, TVs and electronics
- Pathogenic waste
- Radioactive waste
- Propane tanks (>30 pounds)

For year-round disposal options please visit productcare.org to find the nearest Return to Vendor location.

All These Cartons Are Recyclable



When the contents are gone, let the carton live on!



recyclecartons.ca
info@recyclecartons.ca

August 2021



Sunday

Monday

Tuesday

Wednesday

Thursday

Friday

Saturday

1

2 **Civic Holiday**

NO SERVICE

Collection is one day later this week.

3

4

5

6

7

8

9

10

11

12

13

14

15

16

17

18

19

20

21

22

23

24

25

26

27

28

29

30

31



REMEMBER TO GET YOUR HOUSEHOLD HAZARDOUS WASTE READY.

HHW Day is set for Saturday, September 25, 2021. See above for more details.

Have a question? Consult the back cover.
www.chatham-kent.ca



Recycling Guide
Inside Back Cover



SHARPS

COLLECTION
PROGRAM

You Can Return:

- Needles, needle tips and syringes
- Insulin pens
- Lancets
- Other used medical sharps

Components such as glucose meters and cotton swabs should not be disposed of in sharps containers.

Visit www.healthsteward.ca to find your nearest participating pharmacy.

TAKE IT BACK!

Responsibly dispose of your used sharps to help prevent needlestick and sharps injuries.



HEALTH PRODUCTS
STEWARDSHIP ASSOCIATION

HPSA IS FUNDED
BY THE HEALTH PRODUCTS INDUSTRY

For more information, visit:
healthsteward.ca or e-mail info@healthsteward.ca
Call Our Toll-Free Number: 1-844-535-8889

**SAFELY DISPOSE OF YOUR
USED SHARPS DEVICES BY
FOLLOWING THESE STEPS:**

1



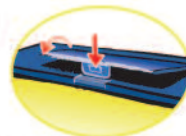
Recap needle and place into approved sharp container offered free of charge at any participating pharmacy.

2



Once the sharp waste has reached the designated fill line, snap lid closed by securing the strip.

3



To permanently close the sharps container, insert the tab into the opening to secure the lid down.

4



Always use an approved sharps container when disposing of used sharps to help reduce the risk of needlestick injuries.

September 2021



Sunday

Monday

Tuesday

Wednesday

Thursday

Friday

Saturday

DON'T BAG YOUR GRASS!

Leave the clippings on the lawn by using a mulching mower. Grass clippings are 85% water and decay quickly, returning valuable nutrients back to the soil.



1

2

3

4

5

6 **Labour Day**

NO SERVICE

Collection is one day later this week.

7

8

9

10

11

12

13

14

15

16

17

18

19

20

21

22

First Day of Fall

23

24

25

Household Hazardous Waste Day Event
(see details on Page 16)

26

27

28

29

30



RECYCLING MATTERS!

Have a question? Consult the back cover.
www.chatham-kent.ca



Recycling Guide
Inside Back Cover

Why?

Why does Chatham-Kent want me to sort my recyclables into two recycling boxes at the curb?

- Curbside collection is based on 2-stream recycling which means papers/newsprint and paper beverage cartons need to be separate from recyclable containers.

- Sorting in two streams makes it easier for the drivers to spot unacceptable items contaminating the stream and leave them behind.
- Less contamination helps make the sorting at the processing facility more effective.
- Less contamination means bales of recyclables meet the quality requirements of recycling markets.
- Better quality recyclables may result in higher revenues paid for Chatham-Kent's recyclables.



TIP: You can pick up two extra boxes for recycling at any municipal office free of charge.

October 2021



Sunday

Monday

Tuesday

Wednesday

Thursday

Friday

Saturday

RECYCLE YOUR LEAVES

Bring leaves and yard waste to a site listed on page 12 so they can be mulched and reused.



3

4

5

6

7

8

9

Fire Prevention Week • October 3-9

10

11 **Thanksgiving Day**
NO SERVICE
Collection is one day later this week.

12

13

14

15

16

17

18

19

20

21

22

23

Waste Reduction Week • October 18-24

24

25

26

27

28

29

30

31

Have a question? Consult the back cover.
www.chatham-kent.ca



Recycling Guide
Inside Back Cover



WASTE CONNECTIONS
OF
CANADA



Contact us today for information on other services we provide to the residents and businesses of Chatham-Kent, including:

Temp Containers Commercial Services Recycling Programs

Call 519.360.9435 or visit the Chatham Office located at 91 Sass Rd.
Open Monday to Friday from 8am to 5pm.



CHATHAM-KENT
RECYCLING INC

What Happens to Your Recycling

**What happens to your recyclables
after your Blue/Black box
is emptied?**

All your recyclables are delivered to Chatham-Kent Recycling (519.689.4651) near Merlin and placed onto conveyor belts for sorting into different types of recycling. The sorting and separation of paper, cardboard and containers (bottles, cans, plastics) from trucks is done by hand and machines.

Not sure if an item is recyclable?
Check the Recycling Guides on pages 6 & 21!

November 2021



Sunday

Monday

Tuesday

Wednesday

Thursday

Friday

Saturday

RECYCLING MATTERS!



1

2

3

4

5

6

DST ends
(turn clocks back
one hour at bedtime)

7

8

Regular collection
this week.

9

10

11 **Remembrance
Day**

12

13

14

15

16

17

18

19

20

21

22

23

24

25

26

27

28

29

30

REMINDER:

The clean-up of garbage from bags that have been ripped open by animals and birds is the responsibility of the property owner. Use your totter cart properly – close the lid!



Have a question? Consult the back cover.
www.chatham-kent.ca



Recycling Guide
Inside Back Cover

Green Resolutions For A New Year

Make a New Year's resolution that benefits you, your family and our Environment! Reduce your Ecological Footprint!

To find out more, visit www.zerofootprint.net

- Use reusable shopping bags or bins when shopping.
- Say no to coffee cups and bottled water; take a reusable mug or bottle when going out.
- Choose purchases wisely: buy local products, and those with less packaging.
- Reduce household waste: recycle, compost and donate for re-use.
- Investigate composting and natural yard care so you'll be ready for a green spring (See page 12 for leaf and yard sites).
- Install CFL bulbs, efficient shower heads, and a programmable thermostat set to a cooler temperature at night and when you are out.
- Dispose appropriately of batteries, paint, old medications, and other chemical waste at the Household Hazardous Waste Event (See page 16) to keep this material out of the landfill site.
- Commit to take public transit, carpool or walk to work or school at least one day a week – or more!

Ring in the New Year with smart choices that save money, reduce waste, and both conserve energy and water. You'll create a more positive future for our shared environment!



Download
Chatham-Kent's app
and never miss another
collection day!

Recycle Coach includes the
What Goes Where search function
for collection or drop-off
information on over 10,000 items -
right at your fingertips!



Download on the
App Store

ANDROID APP ON
Google play

December 2021



Sunday

Monday

Tuesday

Wednesday

Thursday

Friday

Saturday

Christmas trees collected at the curb are sent to landfill for disposal. Each tree counts as one 'bag' toward your 3-bag limit. **Do not place a full totter cart out at curb in addition to a tree.**



5

6

7

8

9

10

11

12

13

14

15

16

17

18

19

20

21

First Day of Winter

22

23

24

25 Christmas Day

26 Boxing Day

27

28

29

30

31

CHRISTMAS TREES taken to a site listed on page 12 are shredded into wood chips – remove all decorations, tree skirts and plastic bags.

Have a question? Consult the back cover.
www.chatham-kent.ca



Recycling Guide
Inside Back Cover

2-STREAM Recycling Guide

2-STREAM recycling means you separate paper products from all other recyclables. Use two containers, black box for fibres (e.g. beverage cartons, paper & boxboard) and blue box for all other acceptable recyclables. Place all shredded paper and excess paper (excluding boxboard/cardboard/cartons) in a paper or clear plastic bag in or beside your black recycling box.

STREAM 1 Fibre Products In Black Box ONLY



Paper Beverage Cartons:

includes milk, juice & Tetra Pak cartons, drink boxes, paper hot beverage paper cups.



DO NOT recycle foil pouches (i.e. Koolaid Jammers), aluminum foil lined containers (e.g. Boost, wine), etc.



Household Paper/Newspaper, Catalogues, Books, and Telephone Books:

includes mail, white & coloured paper, envelopes, hard (remove the cover) and soft cover books, glossy publications, inserts/flyers.



DO NOT recycle waxed, foil, laminated or gift wrap paper, or fast food waxed soft drink cups.

STREAM 2 Food, Beverage & Liquid Containers In Blue Box ONLY



Glass Bottles and Jars:

Please remove food and rinse.



DO NOT recycle broken glass, drinking glasses, dishes, cups, other ceramics, window glass, light bulbs, mirrors, pottery, glass pots & pans.



Aluminum/Steel Cans Plus Empty Aerosol/Paint Cans:

Please remove food and rinse.

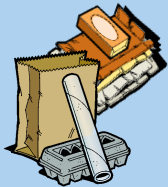


DO NOT recycle coat hangers, pots, needles, batteries and hazardous waste.



Aluminum Foil Containers and Foil:

Pie plates, trays/baking pans and take-out food containers. Please remove/rinse food and flatten.



Paper Egg Cartons and Boxboard:

such as cereal, tissue, detergent, cracker and shoe boxes.

Remove liners and flatten.



Cardboard Boxes:

Break down, flatten and tie in bundles no larger than 75 cm x 75 cm x 20 cm (30" x 30" x 8") and place beside black box.

Please remove food residue and liners from pizza boxes.



Plastic Bottles, Jugs and Tubs:

Now accepting more plastic household rigid containers and tubs with numbers

△ through △ on the bottom of the container, including clamshells and cleaning product containers.

DO NOT recycle toys, Styrofoam™, plastic wrap and bags, flowertrays, K-cups (Keurig, etc.), used oil containers, and unmarked plastics.

Note: Additional recycling boxes are available free of charge at all municipal centres.

Blue or Black Box Bloopers

The following materials

DO NOT belong in your

Blue or Black Boxes:



Styrofoam™ Containers

(foam containers like coffee cups, egg cartons and protective foam packaging)



Plastic Plant Pots and Trays



Foil pouches

(i.e. Koolaid Jammers)

Aluminum foil lined containers

(i.e. wine), etc.



Waxed Boxboard

(frozen food packaging, ice cream containers, etc.)



Food, Beverage & Liquid Containers

Do not use clear/transparent plastic bags for 2-STREAM recyclables.





Municipal Centres

Blenheim

35 Talbot St. West

Chatham

315 King St. West

Dresden

485 St. George St.

Ridgetown

45 Main St. East

Tilbury

17 Superior St.

Wallaceburg

786 Dufferin Ave.

Information Desks

Bothwell

320 Main St.

Thamesville

1 London Rd.

Wheatley

35 Talbot Rd.

519.825.7131

Information that can be found in this calendar

Basic Collection Info	Pages 2 – 5	Large/Bulky Item Collection Days	Page 8
Building Materials/Excess Garbage	Page 7	Metal & Bulky Items (appliances, furniture, carpeting, etc.)	Pages 7 & 8
Chatham-Kent Recycling Inc	Page 19	Recycling Box Replacements	Pages 6 & 10
Chatham-Kent Reuses	Page 2	Recycling Guides	Pages 6 & 21
Christmas Trees	Page 12	Passenger/Light Truck Tire Recycling	Pages 7 & 15
Compact Fluorescent Bulbs	Page 16	Transfer Stations & Fees	Page 7
Curbside Recycling	Pages 6, 9, 10, 18 & 21	Battery Recycling	Pages 7 & 16
Do's & Don'ts	Page 2	Yard Waste, Leaves, Brush, etc.	Pages 7, 11 & 12
Electronic/Electrical Waste	Pages 7 & 15		
Household Hazardous Waste (paint, solvents, pesticides, etc)	Pages 14 & 16		



**recycle
coach**

Turnkey solutions for effective waste management education & outreach.

